



SOMETHING
YOU CAN
ALWAYS
RELY ON:
QUALITY.



COMPROMISE IS A GOOD THING. BUT NOT WHEN QUALITY IS AT STAKE.

We use plumbing fittings in the areas of our everyday lives where hygiene, safety and comfort are crucial: in the bathroom and the kitchen. We use them, touch them, every day. They provide us with the water we use to cleanse ourselves and care for our bodies; for cooking; and to drink.

So it is vital to ensure maximum quality of bathroom and kitchen fittings. With HANSA you do not have to make any compromises. Because we give you much more than just a quality promise: solid facts, good reasons, and decisive arguments, demonstrating where the differences lie – and why it is always worth choosing the best.



WE GUARANTEE QUALITY – MADE BY HANSA.

HANSA's high-quality fittings not only look good, they are carefully conceived down to the smallest detail, designed in accordance with the latest technical state of the art, and incorporating all attributes of sustainability and durability. That is what we mean by "intrinsic quality".

- Our products are made for the global market – based on tried and proven German development expertise and in HANSA quality.
- The entire development and production process is organised so that quality work is assured at every stage and is 100% controlled.





- Quality begins right from the product development stage. We place great value in design which is unusual, but always timeless, and is not oriented merely to short-term modishness. Innovation is never an end in itself, but must benefit our customers and meet the specific requirements of their markets.
- Always thinking a step ahead is typical of HANSA. We have always been the ones to initiate new developments and redefine standards.
- Our aim is to deliver outstanding, comprehensive, multi-partner service – backing up our products, but helping in many more ways too. Consequently, our services extend from a Service Hotline, through training courses, to sales support.

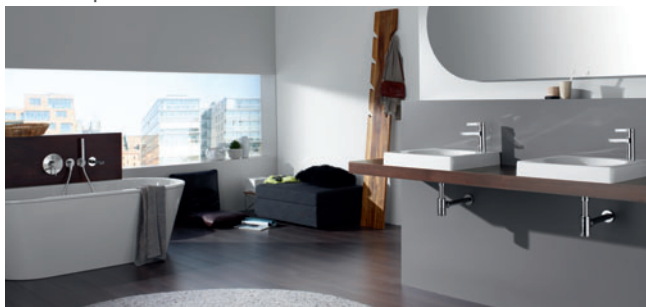
WHERE WATER FLOWS, WE PRESENT IT IN ITS MOST ATTRACTIVE FORM.

HANSA makes fittings for both the bathroom and the kitchen. The two ranges are structured in the same way, and many product series extend across both. That makes it easy for you to find your way around the range, fitting out your bathroom and kitchen with products from the same series if you wish. What they all have in common is their high standard of design, functionality, safety and comfort.

HANSA|EDITION



HANSA|LIVING



HANSA|HOME





HANSA|LIVING



HANSA|HOME



Bathroom and kitchen fittings from HANSA are designed to make an immediate visual impact, and to keep pleasing you for a very long time. Sustainability is a value which is of special importance to us – just as it is to you. That is why we focus on making solid, durable products which you can enjoy using on a daily basis for many years.

Alongside fittings for private bathrooms and kitchen, HANSA also offers a wide variety of modern special fittings for public facilities and the highly sensitive care sector.

RESPONSIBILITY AND RESPECT.



For us, delivering comprehensive intrinsic quality also means fulfilling our responsibility to the environment and to society at large. Reflecting that commitment, one of our principal concerns is to integrate water- and energy-saving technologies into our products in such a way that you consume fewer resources without having to compromise on comfort or the pleasurable experience of water. All HANSA washbasin fittings are classified as noise class 1.

GREEN RESPONSIBILITY

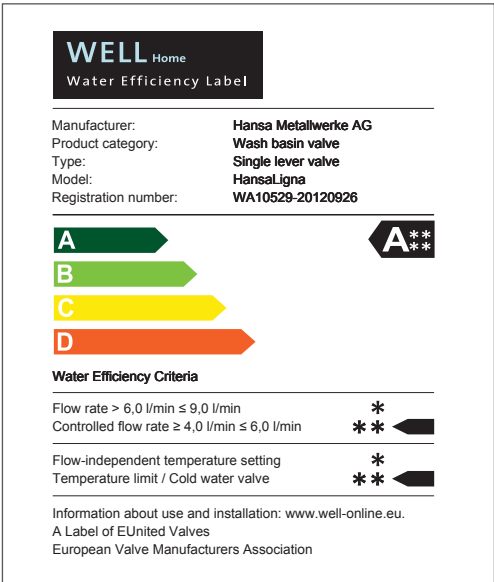


The "Green Responsibility" label guarantees modern, ecologically sound HANSA technology, ensuring

minimal usage of water and energy and adherence to strict international guidelines.

WELL CERTIFICATION

- WELL (Water Efficiency Label) is the product classification system of the European sanitary fittings industry. It is intended as a guideline for buying decisions – particularly in terms of the responsible handling of water.
- Classified in the categories "water volume (flow rate)" and "water temperature", domestic sanitary fittings can be awarded a maximum of four stars. Most of our bathroom ranges have already been awarded the top mark, and many more are set to follow.



SAVING WITHOUT COMPROMISING ON COMFORT.

HANSA|HOME BATHROOM SERIES with Classic cartridge

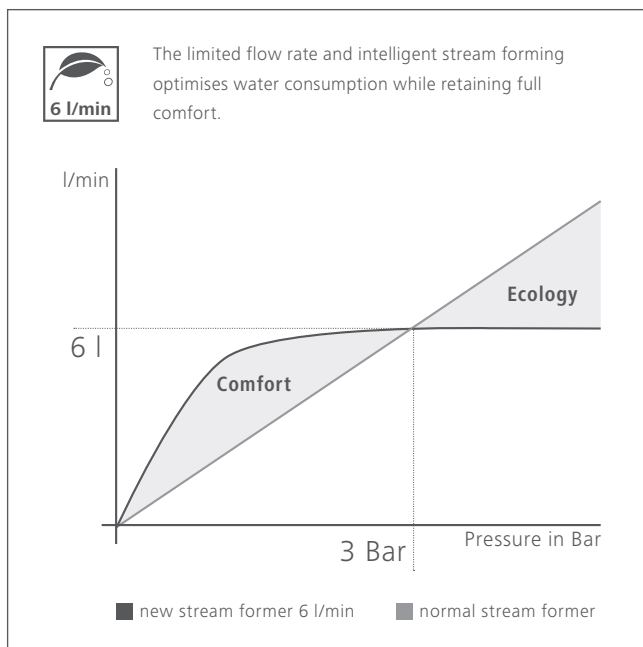
- Classic cartridge with special honeycomb shape stream former reduces water flow rate of all washbasin fittings from 12 l/min to 6 l/min.
- Pleasantly voluminous spray despite halving the actual flow rate.

HANSA|HOME BATHROOM SERIES with HANSAECO control cartridge

- Maximum flow rate limited to 8 l/min.
- Further reduction to 6 l/min possible by a kind of "gear-shift".

HANSA|LIVING BATHROOM SERIES

- Water flow rate of all washbasin fittings reduced to 6 l/min.
- Limitless comfort thanks to complete and optimised spray patterns.



HANSA|HOME AND HANSA|LIVING KITCHEN SERIES

- Water flow rate of all new kitchen fittings reduced to 9 l/min.

WHEN WE REFER TO "PURE WATER", WE MEAN IT LITERALLY.

Before you use water to wash your hands, clean your teeth, wash vegetables, boil food, or for drinking, it passes through your bathroom or kitchen taps. So you need to be very carefully when considering what your fittings are made of. HANSA's comprehensive HANSAPROTEC system ensures that only high-grade, durable materials are used and the quality of your drinking water is preserved.



All HANSA fittings conform to the latest German Drinking Water Regulation with regard to their component materials, as well as to the more stringent requirements of the revised Drinking Water Regulation which came into effect on December 1, 2013.



LESS POLLUTION. MORE PLEASURE.

- All surfaces of HANSA washbasin and kitchen sink fittings coming into contact with drinking water are free of nickel coating.
- The HANSAPROTEC system additionally signifies that all a product's brass components coming into contact with drinking water have a minimal lead content of less than 0.3 %.

This means that HANSA fittings (unlike most conventional plumbing fittings) are well within the limits stipulated by the standard!

OPTIMUM HYGIENE. LONGER LIFE.

- HANSA's special brass alloy is highly resistant to dezincification and corrosion.
- This minimises wash-out of pollutants.

BRASS ALLOY



HANSA



Conventional



CERTIFIED PLASTICS.

GUARANTEED SAFETY.

- Many HANSA fittings are equipped with the WATER SAFE Hitec functional core. This is made of plastics with DVGW¹ certification, conforming to KTW² standards, and tested in accordance with W 270³, meaning they are hygienically safe.

¹ German Association of the Gas and Water Trades

² Plastics and drinking water

³ Drinking water approval for materials

HANSA SHOWER SYSTEMS AND SHOWER HEADS: FOR AN ALL-ROUND GOOD FEELING.



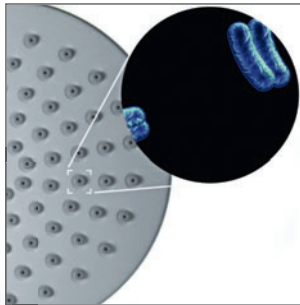
Dishwasher safe: the detachable shower head base of the special hand showers **HANSAMEDIJET** and **HANSAMEDIJET FLEX**.

The **HANSAPROTEC** system offers you maximum safety and comfort for your shower systems and shower heads too:

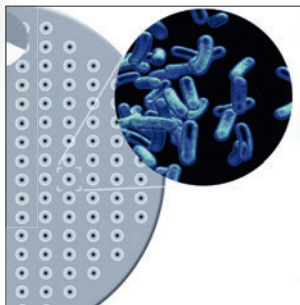
- The **EASY CLEAN** concept enables the shower head base of the new **HANSAMEDIJET** and **HANSAMEDIJET FLEX** hand showers to be detached and even cleaned in a dishwasher. Soft nubs on the shower heads reduce lime-scaling of the water outlets.
- Innovative **HANSA laminar technology** guarantees pure water enjoyment. It carries clean water in closed systems with no addition of air. No swirling or disturbing noise occurs. The special design of the water outlets produces a soft spray which at the same time minimises the formation of aerosols. You can enjoy a perfect shower, safe in the knowledge that you are saving energy too.
- More safety: **THERMO COOL** ensures that metal surfaces do not get hot.



The HANSAPROTEC label guarantees hygienic showering comfort.



HANSA employs only high-grade KTW and W 270 tested plastics which greatly reduce the potential for bacteria to breed.



By comparison: germs on a conventional shower head made of not-certified materials.

REASSURING SAFETY. PERCEPTIBLE COMFORT.

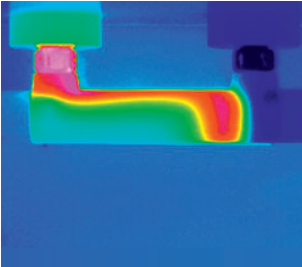
The right temperature is key to an enjoyable shower. That is why our thermostats feature a safety-stop preset to 38°C, providing reliable protection against scalding. When hotter water is needed, the lock can be released at the press of a button, so increasing the temperature further. It is not just the water which is maintained at a safe and pleasant temperature. The surfaces of thermostats and showers are kept cool by the **THERMO COOL** system: A special guide inside the hot water pipe prevents the outer metal casing from getting too hot. So you can be sure of being able to touch the surfaces safely at any time.



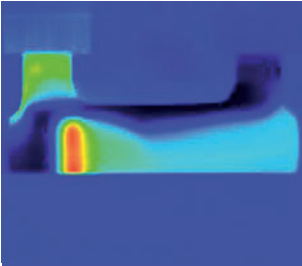
The perfect combination of safety
and comfort:

HANSAVIVA hand shower with
ergonomically shaped handle.

No heat-up of surfaces thanks to
THERMO COOL.



Conventional thermostat



HANSA PRISMA



A thermal imaging camera shows: compared to a conventional thermostat in this price segment (image above), heat development on the casing of the HANSA thermostat is much less thanks to **THERMO COOL** (image below, here HANSA PRISMA) and the short flow of hot water.





OUR STANDARD – YOUR BENEFIT: QUALIFIED TRADE PARTNERS.

Committing to uncompromising quality for us also means: you will find HANSA fittings where you can be assured of receiving expert advice and professional service. HANSA works with sanitary ware wholesalers and plumbers – and it's a highly successful partnership! Whether renovators or architects, private owners, site planners or commercial property developers: together with our partners we are able to offer all customers exactly what they need and expect. Everything comes with a minimum two-year functional warranty, with even a five-year warranty on many items.

QUALITY SIGNED AND SEALED.



Our conformance to the very highest standards and requirements was recently recognised by a special award: In 2012, the readers of "markt intern", the business information service for German plumbing specialists, voted HANSA the "No. 1 specialist trade partner" for the 18th time in a row.



HANSA is a manufacturing partner of the Handwerkermarke (a tradesmen association in Germany) in the HVAC industry. In this context, there is an indemnity agreement for all HVAC trade partner members. HANSA guarantees assumption of liability up to 5 years (including the remedial actions) and thus offers its trade partners, additional safety in the case of a claim.



In 2013, HANSA Metallwerke AG was successfully audited for the 19th year in succession according to the ISO 9001 international quality management standard: "Process-modelling systems and continuous product life-cycle management are implemented with exemplary diligence by HANSA."



HANSA offers a wide range of fittings bearing the DVGW quality mark, signifying their conformance to the relevant standards and maximum limits for micro-organism growth on plastics.

QUALITY FOR US MEANS PROVIDING YOU WITH PRODUCTS YOU WILL LOVE.



Plumbing fittings are items of everyday use. We believe that means they should not only be functional, but fascinating too. Things you see and use every day should give you pleasure, stimulate your senses, and conform to high aesthetic ideals. That is what we seek to achieve! Clear and distinctive design concepts, uncompromising attention to detail, refined water flow solutions and the interplay of light and colour all combine to make using HANSA fittings an everyday pleasure – and make water a genuine experience.

The high "emotional quality" of our fitting designs has been affirmed by numerous international awards. But what we believe to be much more important is the discernible delight of our customers: Can there be any stronger motivation to keep on bubbling with new ideas?

THERE ARE MANY GOOD REASONS TO CHOOSE HANSA. HERE ARE THE TOP 10:

1. The security of a major traditional brand.
2. Comprehensive product and service quality with "Made by HANSA" corporate values.
3. Product ranges tailored to customers' needs and the demands of global markets.
4. Assured compliance with stringent international standards.
5. High-grade materials, first-class workmanship.
6. Sustainably manufactured products which minimise water and energy consumption.
7. State-of-the-art technologies, innovative in design and function.
8. A leader in drinking water hygiene, safety and comfort.
9. Branded products distributed through specialist outlets and the plumbing trade.
10. Minimum 10-year replacement parts availability guarantee after end of production.

HANSA – always the right choice.



HANSA – ALWAYS THERE FOR YOU.

HANSA HEAD OFFICE

HANSA Metallwerke AG
Sigmaringer Str. 107
70567 Stuttgart
Germany
Tel.: +49 711 1614 0
Fax: +49 711 1614 368
Customer Service Centre
Tel.: +49 711 1614 888
Fax: +49 711 1614 801
info@hansa.de

AQUAPUNKT

Rediscover water.
Visit us in Stuttgart.
www.aquapunkt.com

www.hansa.com



a member of  orasgroup